



Manufacturing Showcase



Manufacturing



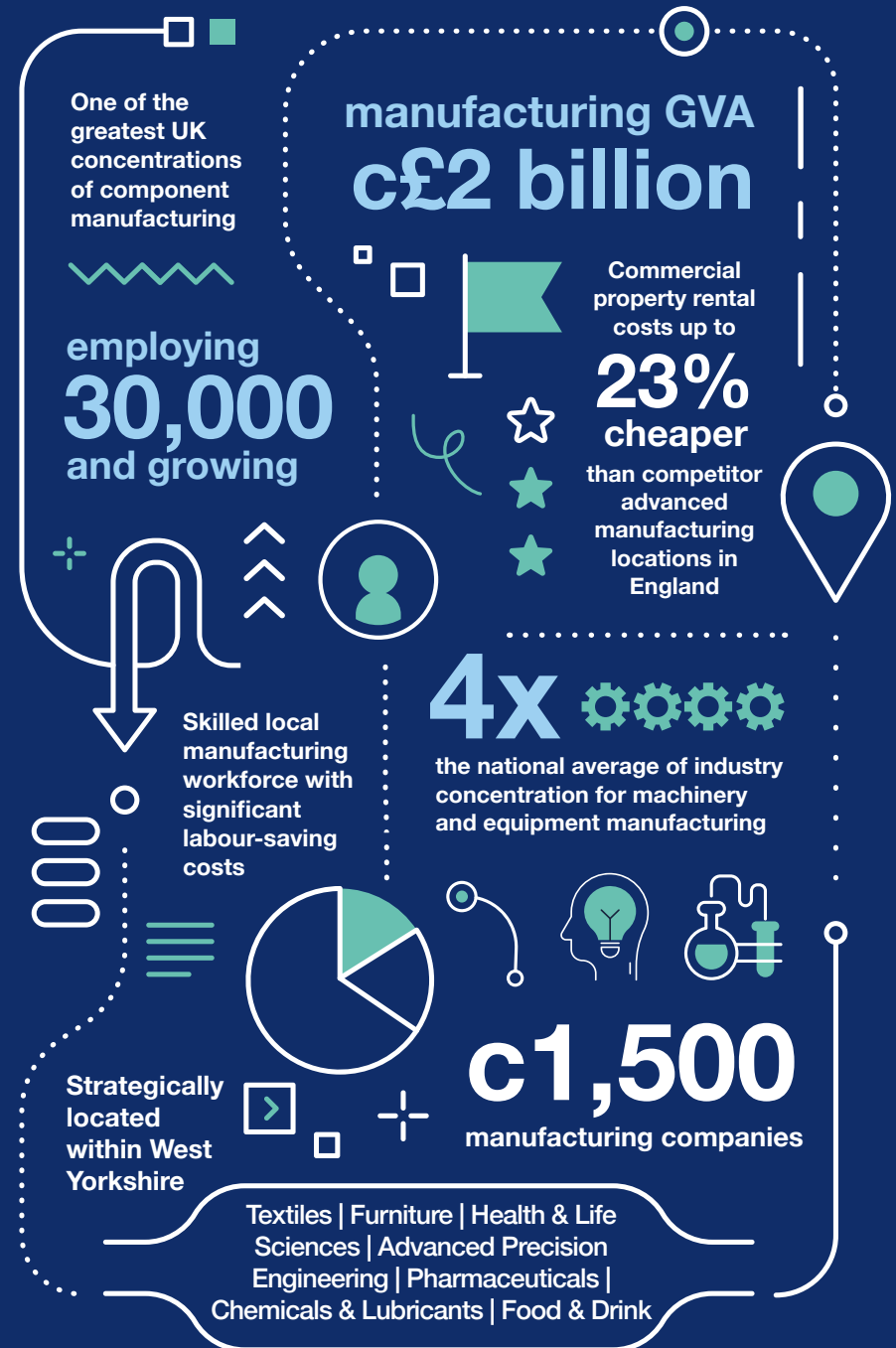
With twice the national average concentration of manufacturing and engineering industry, and an established global reputation in multiple fields, Kirklees has a pivotal role in UK manufacturing capability.

Global manufacturers, precision engineering supply chain companies, and innovators blend precision manufacturing with cutting-edge technologies like data analytics, artificial intelligence, and robotics to excel on the world stage.

Our diversity is our strength. From the production of textiles, furniture, speciality chemicals and lubricants, critical components, turbocharges and motors, to greetings cards, paint, food and drink, hi-tech medical devices and instruments - there are few industries we don't supply!

Industry leaders since the 18th century, our manufacturing base has continually evolved, innovated and expanded, growing an impressive local supply chain, and working closely with academia to drive success. Key local businesses include Syngenta, PC Specialist, Fox's biscuits, UK Greetings, PPG Architectural Coatings, David Brown Santasalo, Mars, Polyseam, Bower Roebuck, Camira Fabrics, Thornton & Ross and Kluber Lubrication.

Supported by our location at the centre of the northern industrial corridor, we hold a strategic position within West Yorkshire - one of the largest manufacturing bases in the UK, with 6,000 businesses employing 117,000 people and generating over £7billion a year.



Note: Figures relate to Kirklees unless otherwise stated

Excellence in multiple fields

From the origins of cloth production as a supplement to agricultural work, to large scale textile manufacturing that spurred the development of the chemical and engineering sectors, and more recently precision engineering and medical technology, the firms leading these innovations have had a lasting impact on the local and national economy.

Our established manufacturing sector has an outstanding reputation for design, production and maintenance plus the benefit of a uniquely attractive and important location. Our well-established, well-connected clusters work together to shape the future today.

Did you know?

Calder Textiles Ltd yarn can be found in carpets at Buckingham Palace, the Whitehouse, airports and aircraft worldwide and Wimbledon's tennis balls.



Textiles

This is the place to be for forward-thinking textiles and supply chain firms. We have 360 market-leading textile businesses across the region and a skilled textiles workforce of 10,000 in West Yorkshire alone. Targeted industry-linked training in textile skills, and an outstanding reputation for textiles research and development makes Kirklees an ideal base for fashion and textile businesses and their supply chain.

Firms include:

- **Bower Roebuck** – renowned for producing the most sumptuous fabrics and designs to global luxury brands
- **W T Johnson and Sons** – a world-leader in textiles dyeing and finishing,
- **John Cotton** – whose pillow and duvet products include Slumberland,
- **Camira Fabrics** – world leaders in contract fabrics
- **Roaches International** - globally respected manufacturer of machinery and instruments
- **Duvalay** – award winning mattress producers
- **Lawton Yarns** – The UK's largest woollen yarn spinner.

Did you know?

Wooltex UK has expanded rapidly since its inception in 1996, and is one of the most modern textile mills in the UK, having re-shored its manufacturing.



Advanced Precision Engineering (APE)

We have one of the largest concentrations of component manufacturing in the UK and four times the national average industry concentration for machinery and equipment manufacturing.

Businesses produce critical components and analytical instruments for diverse markets, including automotive, aerospace, defence, MedTech and energy sectors.

Join experts in their field like **Cummins**, **David Brown Santasalo**, **Highfield Gears**, **Thomas Broadbent & Sons**, **Holtex Ltd** and **AxFlow Group** who all have operations in Kirklees.

Did you know?

Reliance Precision Ltd made the gears used on the Rosetta space probe. The company continues to support the space industry, supplying custom-built gears for a variety of satellite applications.

Health & Life Sciences

Industry clusters in next generation medical devices and manufacture of medical tools and instruments deliver on a world stage.

Local firms include:

- **Paxman** – pioneers in scalp cooling technology,
- **Kromek** – suppliers of radiation detection components and devices,
- **Nanosonics** – medical technology solutions to prevention infection
- **Ferno** – manufacture patient transportation and rescue solutions
- **Reliance Precision** - providing precision electro-mechanical solutions to the life sciences and pharmaceutical industries and
- **The Body Doctor** – develop innovative solutions to optimise eye health and winners of Yorkshire’s Fastest Growing Company in 2022.

Incentive packages – coming soon

Driven by the University of Huddersfield’s new £250m **National Health Innovation Campus** and **West Yorkshire Life Sciences Investment Zone**, a wealth of business incentives and support programmes will be available for innovative businesses that base themselves in Huddersfield from 2024, supporting finance, product planning, design, prototyping and testing.





Furniture

Employing 3.45 times the national average, furniture manufacturing is long-established in Kirklees. From bespoke items to large scale manufacturing, firms use quality innovative design to create high spec sustainable furniture solutions for a broad range of industries and residential settings.

Firms include: **HSL** and **Shackletons, Connection, Rider, Daval Furniture** and **GB Projects**.

Did you know?

Now known for producing high quality kitchens, bedrooms and bathrooms, master cabinet maker **J.T. Ellis** originally established the company in 1891 to make high-quality bespoke baptism fonts and church furniture.

Pharmaceuticals and drugs discovery

- **Thornton and Ross** is one of the largest OTC pharmaceutical manufacturers in the UK, producing household products and own some of the country's most loved brands such as Covonia®, Hedrin®, Cetraben® as well as the leading disinfectant Zoflora®.
- **Dr Reddy's Laboratories (EU) Ltd** was originally set up by philanthropist and entrepreneur Dr K Anji Reddy in 1984, powered by his passion to make medicines more affordable. Today, millions of patients in 66 countries have access to Dr Reddy's products.





Chemicals and lubricants

Syngenta, one of the world's leading agriscience companies, produces speciality chemicals at its Huddersfield Manufacturing Centre making important crop protection products to help growers meet demand for food, feed and fuel. Around 80% of its employees live in Kirklees.

Klüber Lubrication transformed from a retail company for mineral oil products into a global expert in speciality lubricants ensuring drive units work, machines produce and water flows. Polyseam have manufactured first class fillers and sealants for the majority of the world's leading suppliers since 1993.

Kirklees' **PPG Architectural Coatings** plant is Europe's largest paint manufacturing complex. PPG makes the famous Johnstone's paint brand.

Solenis produce speciality chemicals for water-intensive industries.

Did you know?

Hewitt & Booth are industry leaders in the bespoke manufacturing of Scientific grade flexistems to safely clean and sterilise scientific apparatus. Since they started in 1922, they've also made enough pipe cleaners to reach the moon!

Food and drink

One of our fastest growing specialisms, with a significant increase in artisan product development, Kirklees-based food and drink companies exceed national average output. **Mars** employ over 1000 local people, working on production lines around the clock producing cat and dog treats under the brands Pedigree, Rodeo and Schmackos. Manufacturing chutney's, relishes, sauces, salsas and jellies, **Shaws (Huddersfield) Ltd** has grown significantly with staff doubling since the start of 2023.

6 million biscuits are baked at the **Fox's biscuits** factory in Birstall each year. The company's roots can be traced back to 1853 in Batley. Opening as recently as 2015, **Magic Rock Brewery** produces 2.7million pints of beer per year, exporting to 25 countries. Now owned by **Asda**, Kober Ltd has expanded significantly since 2007, employing 500 at its Cleckheaton site.



Perfectly placed

Part of West Yorkshire, Kirklees is strategically located at the heart of the UK and the centre of the Leeds, Manchester and Sheffield City Region triangle - a pivotal central location within the UK's £339billion northern powerhouse.

Excellent transport networks include:

- Easy access to the M62, M1 & A1
- Direct rail links to Manchester and Leeds in 30 minutes, through to London in 2 hours
- Manchester and Leeds Bradford airports within 45 minutes, and a direct train to Manchester airport
- Seaports at Liverpool, Hull, Immingham and Teesport within 2 hours



Why Kirklees

Kirklees is the perfect place for businesses to grow, innovate and improve efficiency. We have industrial property solutions for investing businesses, including priority areas offering incentives and opportunities for development of employment space.

An integral part of our £8.35 billion GVA economy, 15,000 local businesses benefit from:



Commercial property rents up to c15% cheaper than competitor destinations



Grade A office space costing up to c63% less than nearby cities



Potential incentives to support delivery of employment space



Fast access to world-leading research and innovation centres



Affordable gigabit-speed internet services across 86% of the district



A highly developed sector supply chain and easy access to exporting



Access to 7 million consumers within one-hour's travel



Dedicated business support via Business Kirklees



A skilled local workforce, with significant labour-saving costs



A beautiful, vibrant place to live and work



Innovation

Our strength in manufacturing builds on our incredible industrial heritage, the strong links between academic research and production, and the collaborative and open approach across the manufacturing ecosystem.

With a focus on industry 4.0 digitalisation, high-performance materials, automation and low carbon technologies, innovation in product and process development across the Kirklees' Manufacturing sector is being driven by fast and easy access to academic and research centres of excellence.

Centres of Excellence

In the UK's Top 10 for Knowledge Transfer, the University of Huddersfield has multiple specialisms including technical textiles, metrology, advanced manufacturing, precision engineering, and industry 4.0 technologies.

- **Centre for Precision Technologies**
- **Technical Textiles Research Centre**
- **Centre for Engineering Materials**
- **Centre for Industrial Analytics**
- **Centre for Efficiency and Performance Engineering**
- **Centre for Innovative Manufacturing**
- **Institute of Railways Research**
- **Future Metrology Hub**



The **National Physical Laboratory**, the UK's National Measurement Agency has its only facility outside London in Huddersfield, specifically chosen to be close to a concentration of high value engineering firms who can benefit from the agency's world leading research capacities.

The **Textiles Centre of Excellence** is heavily involved with R&D projects and provides a wide range of textile and clothing and production facilities and training across a range of sectors.

Within an hour, businesses can access a range of world-leading research and technology centres in key areas such as high-performance materials, manufacturing digitisation, low carbon technologies and automation.

- **Advanced Manufacturing Research Centre, Sheffield**
- **Centre for Immersive Technologies, Leeds**
- **Leeds Institute of Textiles & Colour**
- **Nuclear Advanced Manufacturing Research Centre, Sheffield**
- **Advanced Machining and Productivity Institute, Rochdale**
- **National Facility for Innovative Robotic Systems, Leeds**
- **Henry Royce Institute for advanced materials research and innovation, Manchester**
- **Bio-renewable Development Centre, York**



Collaboration

Promoting collaboration between industry and academia, the **3M Buckley Innovation Centre** in Huddersfield helps businesses to innovate, connect and grow through access to knowledge, support, R&D and technology.



The **Calderdale and Kirklees Manufacturing Alliance** brings together manufacturing businesses across West Yorkshire. Initiatives drive productivity, resilient local supply chains, attract and engage talent to underpin the region's economy and engineering reputation in a global marketplace.



Skilled workforce

Business and educators work together to shape future talent, delivering skills, training and apprenticeships aligned to industry needs.

The University of Huddersfield is a Teaching Excellence Framework gold-rated University offering higher level education in disciplines including electronic and electrical engineering, medical engineering technologies, textiles, mechanical engineering, computer science, supply chain management and logistics, and artificial intelligence. In total, the region's seven universities produce 15,000 STEM graduates each year.

Kirklees College is one of the leading apprenticeship providers in the UK, offering 30 courses which train more than 1,000 people each year in first-class facilities, as well as T-Levels, 16-18 courses and leadership management programmes for those looking to develop in the industry.

Kirklees College: Engineering Centre

State-of-the-art equipment and workshops. **Investment:** £7.5M.
Courses: Computer Numerical Control (CNC), manufacturing, maintenance, mechanics, fabrication and welding.

Kirklees College: Process Manufacturing Centre

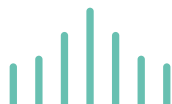
Employer-led facility offering industry-standard, automated process plant facilities and chemistry lab. **Investment:** £5M.
Courses: Engineering, supply chain, operations and food and drink.

The Textiles Centre of Excellence

The largest provider of fashion and textiles apprenticeships in the UK and provides flexible training at all levels – from pre-entry to foundation degree equivalent programmes – with an eye on the future skills needs of the fashion and textile manufacturing sector.

Greenhead College

The number one A-Level college in Yorkshire, offering traditional A levels including maths, further maths, physics and computer science.



Dedicated team

Our team are ready to offer information, organise site visits, create opportunities, remove barriers and open doors to support your business relocation or expansion project.

We have a bespoke service to support you on:

- Economic and market intelligence
- Access to local supply chains
- Links to networks, trade bodies and business groups
- Land, property and infrastructure support
- Business information, advice and support
- Finance, funding and incentives
- Assistance with recruitment, education and training

Get in touch...

Andrew Sharp - Strategic Partnership Manager
andrew.sharp@kirklees.gov.uk

James Barker - Inward Investment Project Officer
james.barker@kirklees.gov.uk

Jess Newbould - Inward Investment Project Officer
jess.newbould@kirklees.gov.uk





 businesskirklees.com/invest

 invest@kirklees.gov.uk

 01484 221000

