

# Advanced Precision Engineering Showcase



# Industry leaders in Advanced Precision Engineering



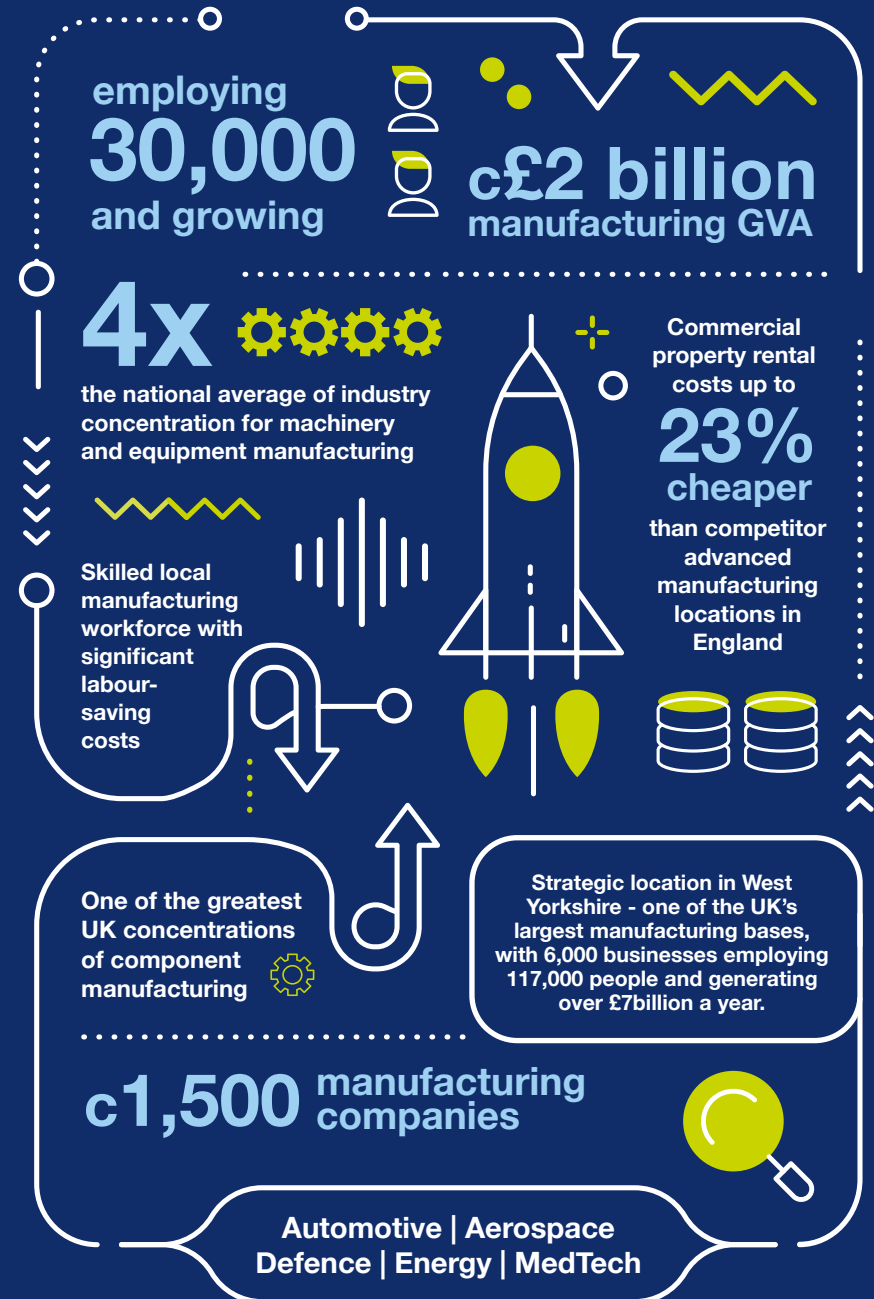
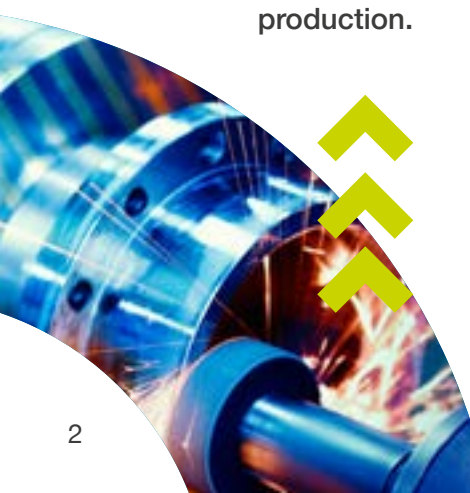
With twice the national average concentration of manufacturing and engineering industry, we have an established reputation which includes design, process, electrical and mechanical engineering, technical textiles, furniture, speciality chemical and lubricant production.

A vital part of UK advanced manufacturing capability, Kirklees' advanced precision engineering cluster produces gears, bearings, valves, pumps, motors, turbo chargers and other critical components for diverse markets.

Global automotive manufacturers, niche precision engineering supply chain companies and leading-edge innovators combine precision manufacturing with data analytics, artificial intelligence and robotics to deliver on the world stage.

Key businesses in Kirklees include Cummins, David Brown Santasalo, Reliance Precision, Holtex, and VTL. High-technology business in the cluster include Ionix Advanced Technologies, Olympus Technologies and Wayland Additive.

Precision engineering businesses investing in Kirklees will find we're located at the heart of the UK's advanced precision engineering capability and strategically located in West Yorkshire. This means direct easy access to UK and international markets, skilled workers, concentrated supply chains and established innovation assets to support research and development.



Note: Figures relate to West Yorkshire unless otherwise stated

# Perfectly placed

Part of West Yorkshire, Kirklees is strategically located at the heart of the UK and the centre of the Leeds, Manchester and Sheffield City Region triangle - a pivotal central location within the UK's £339billion northern powerhouse.

Excellent transport networks include:

- Easy access to the M62, M1 & A1
- Direct rail links to Manchester and Leeds in 30 minutes, through to London in 2 hours
- Manchester and Leeds Bradford airports within 45 minutes, and a direct train to Manchester airport
- Seaports at Liverpool, Hull, Immingham and Teesport within 2 hours



# Why Kirklees

**Kirklees is the perfect place for businesses to grow, innovate and improve efficiency. We have industrial property solutions for investing businesses, including priority areas offering incentives and opportunities for development of employment space.**

An integral part of our £8.35 billion GVA economy, 15,000 local businesses benefit from:



Commercial property rents up to c15% cheaper than competitor destinations



Grade A office space costing up to c63% less than nearby cities



Potential incentives to support delivery of employment space



Fast access to world-leading research and innovation centres



Affordable gigabit-speed internet services across 86% of the district



A highly developed sector supply chain and easy access to exporting



Access to 7 million consumers within one-hour's travel



Dedicated business support via Business Kirklees



A skilled local workforce, with significant labour-saving costs



A beautiful, vibrant place to live and work



# Innovation

With focus on industry 4.0 digitalisation, high-performance materials, automation and low carbon technologies, innovation in Kirklees' Advanced Precision Engineering sector is being driven by fast and easy access to academic and research centres of excellence.

There's a strong collaborative and open approach to the future of manufacturing processes across the region.

## Centres of Excellence

The University of Huddersfield has multiple specialisms including metrology, advanced manufacturing, precision engineering, and industry 4.0 technologies.

- Centre for Precision Technologies
- Centre for Industrial Analytics
- Centre for Efficiency and Performance Engineering
- Centre for innovative Manufacturing
- Institute of Railways Research
- Future Metrology Hub

The **National Physical Laboratory**, the UK's National Measurement Agency has its only facility outside London in Huddersfield, specifically chosen to be close to a concentration of high value engineering firms who can benefit from the agency's world leading research capacities.



## World-leading

Within an hour, businesses can access a range of world-leading research and technology centres in key areas such as high-performance materials, manufacturing digitisation, low carbon technologies and automation.

- **Advanced Manufacturing Research Centre, Sheffield**
- **Nuclear Advanced Manufacturing Research Centre, Sheffield**
- **Advanced Machining and Productivity Institute, Rochdale**
- **National Facility for Innovative Robotic Systems, Leeds**
- **Henry Royce Institute for advanced materials research and innovation, Manchester**
- **Bio-renewable Development Centre, York**



## Collaboration

Promoting collaboration between industry and academia, the **3M Buckley Innovation Centre in Huddersfield** helps businesses to innovate, connect and grow through access to knowledge, support, R&D and technology.

The **Calderdale and Kirklees Manufacturing Alliance** brings together manufacturing businesses across West Yorkshire.

Initiatives drive productivity, resilient local supply chains, attract and engage talent to underpin the region's economy and engineering reputation in a global marketplace.

# Skilled workforce

**Business and educators work together to shape future talent, delivering skills, training and apprenticeships aligned to industry needs.**



**The University of Huddersfield** provides higher level education in electronic and electrical engineering, energy engineering, mechanical engineering, computer science, and artificial intelligence. West Yorkshire's seven universities produce approximately 15,000 STEM graduates each year.

**Greenhead College** is the number one A-Level college in Yorkshire.

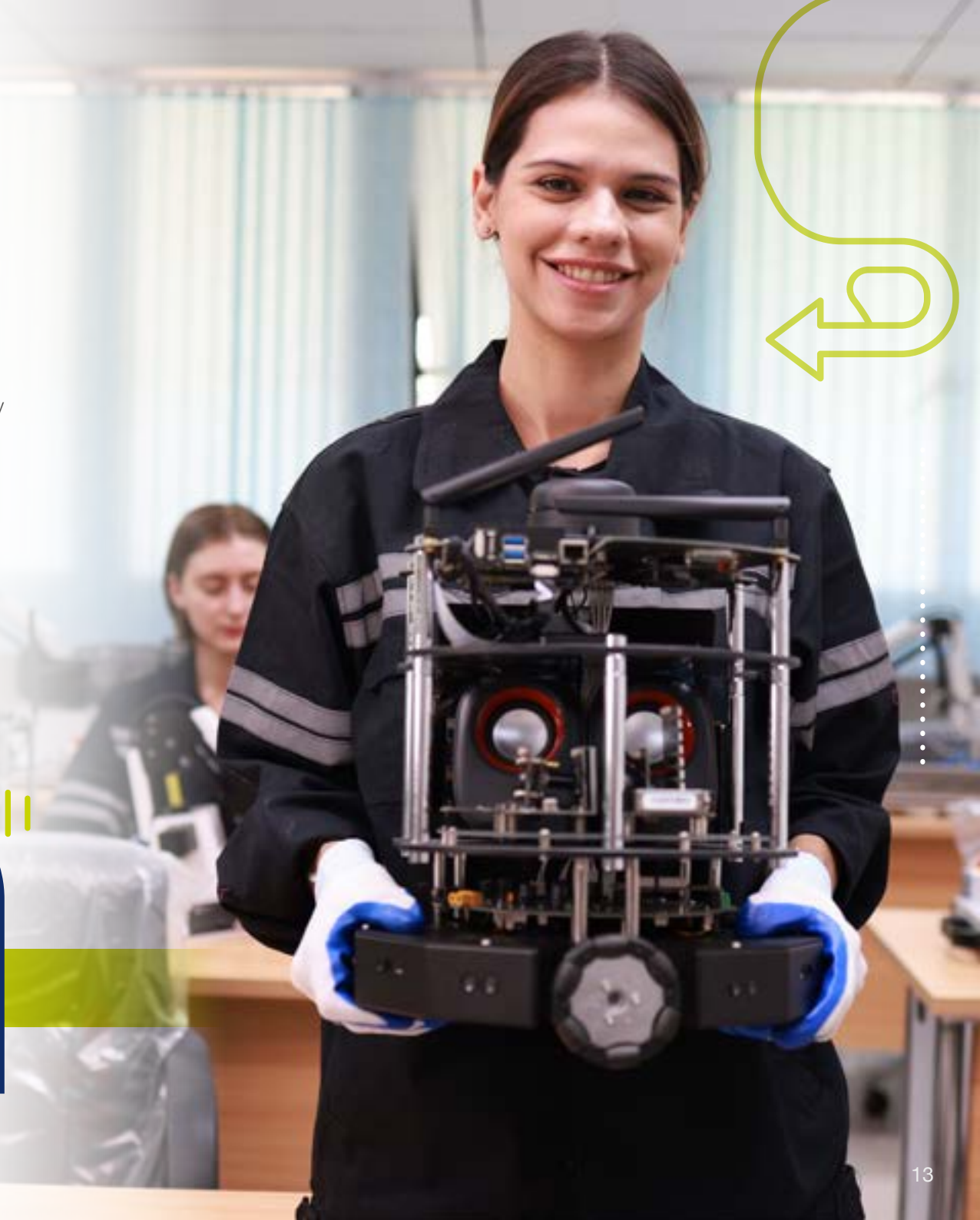
**Kirklees College** is one of the leading apprenticeship providers in the UK. It offers 30 occupational courses training 1000 apprentices each year in first-class facilities, as well as T-Levels, 16-18 courses and leadership management programmes for those looking to develop in the industry.

## Kirklees College: Engineering Centre

State-of-the-art equipment and workshops. **Investment:** £7.5M.  
**Courses:** Computer Numerical Control (CNC), manufacturing, maintenance, mechanics, fabrication and welding.

## Kirklees College: Process Manufacturing Centre

Employer-led facility offering industry-standard, automated process plant facilities and chemistry lab. **Investment:** £5M.  
**Courses:** Engineering, supply chain, operations and food and drink.



# Dedicated team

Our team are ready to offer information, organise site visits, create opportunities, remove barriers and open doors to support your business relocation or expansion project.

We have a bespoke service to support you on:

- Economic and market intelligence
- Access to local supply chains
- Links to networks, trade bodies and business groups
- Land, property and infrastructure support
- Business information, advice and support
- Finance, funding and incentives
- Assistance with recruitment, education and training

## Get in touch...

**James Barker** - Inward Investment Project Officer  
[james.barker@kirklees.gov.uk](mailto:james.barker@kirklees.gov.uk)

**Jess Newbould** - Inward Investment Project Officer  
[jess.newbould@kirklees.gov.uk](mailto:jess.newbould@kirklees.gov.uk)







 [businesskirklees.com/invest](https://businesskirklees.com/invest)

 [invest@kirklees.gov.uk](mailto:invest@kirklees.gov.uk)

 01484 221000

